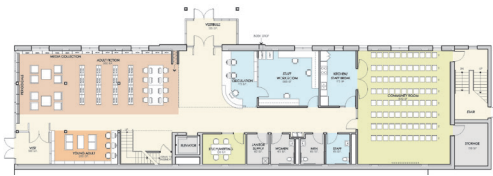
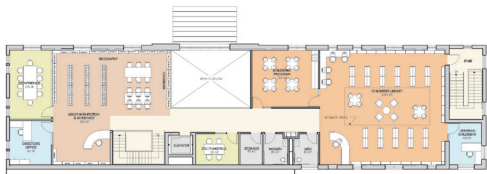


Ethelbert B. Crawford Public Library

Monticello, New York



First Floor Plan



Second Floor Plan



architecture+ worked with the Crawford Library to evaluate the development potential for a new library on a variety of sites over the course of several years. In 2011, an existing building on Broadway in the Village of Monticello was identified as a potential option. architecture+ completed conceptual design for the renovation of the building into a 10,000 square foot library. In 2012, the project passed referendum.

The conceptual design includes outdoor park space for library programs as well as parking. Interior program space includes community rooms, study rooms, meeting rooms, seating for patrons, workspace for staff, and expanded collection capacity.

The building, which will be completely accessible, is designed with two entrances. The circulation desk is strategically located so that both exterior entrances and the access to the second floor can be monitored from a single location.

In addition, the first floor design includes a folding lockable grille so that the community room will be available for after hours public use.